

杭州士兰集成电路有限公司
杭州(下沙)经济开发区东区 10 号路 308 号

以下测试之样品是由申请者所提供及确认: 开关管芯 (YQ)

SGS 工作编号 : GZ12399633EC
SGS 内部编号 : 18.8
样品接收日期 : 2010 年 3 月 1 日
测试周期 : 2010 年 3 月 1 日 - 2010 年 3 月 4 日

测试要求 : 根据客户要求测试

测试方法 : 请参见下一页

测试结果 : 请参见下一页

测试结论 : 基于所送样品进行的测试, 测试结果与欧盟 RoHS 指令 2002/95/EC 以及后续修正指令的要求**相符**。

通标标准技术服务有限公司
授权签名



Manson Yang 杨跃飞
高级工程师

通标标准技术服务有限公司
授权签名



Jane He 何晓燕
技术经理

This document is issued by the Company under its General Conditions of Service printed overleaf or available on request and accessible at http://www.sgs.com/terms_and_conditions.htm. Attention is drawn to the limitation of liability, indemnification and jurisdiction issues defined therein. Any holder of this document is advised that information contained hereon reflects the Company's findings at the time of its intervention only and within the limits of Client's instructions, if any. The Company's sole responsibility is to its Client and this document does not generate parties to a transaction from exercising all their rights and obligations under the transaction documents. Any unauthorized alteration, forgery or falsification of the content or appearance of this document is unlawful and offenders may be prosecuted to the fullest extent of the law.
Unless otherwise stated, the results shown in this test report refer only to the sample(s) tested. This document cannot be reproduced except in full, without prior approval of the Company.



测试结果:

样本 1 描述: “芯片”

RoHS 指令 2002/95/EC

测试项目	单位	测试方法 (参考)	测试结果	MDL	限值
镉 (Cd)	mg/kg	IEC 62321: 2008(章节 8/9/10), ICP-OES	N.D.	2	100
铅 (Pb)	mg/kg	IEC 62321: 2008(章节 8/9/10), ICP-OES	N.D.	2	1000
汞 (Hg)	mg/kg	IEC 62321: 2008 (章节 7), ICP-OES	N.D.	2	1000
碱性溶液萃取测六价铬 (CrVI)	mg/kg	IEC 62321: 2008(附录 C), UV-Vis	N.D.	2	1000
多溴联苯(PBBs)之和	mg/kg	-	N.D.	-	1000
单溴联苯	mg/kg	IEC 62321: 2008(附录 A), GC-MS	N.D.	5	
二溴联苯	mg/kg	IEC 62321: 2008(附录 A), GC-MS	N.D.	5	
三溴联苯	mg/kg	IEC 62321: 2008(附录 A), GC-MS	N.D.	5	
四溴联苯	mg/kg	IEC 62321: 2008(附录 A), GC-MS	N.D.	5	
五溴联苯	mg/kg	IEC 62321: 2008(附录 A), GC-MS	N.D.	5	
六溴联苯	mg/kg	IEC 62321: 2008 (附录 A), GC-MS	N.D.	5	
七溴联苯	mg/kg	IEC 62321: 2008 (附录 A), GC-MS	N.D.	5	
八溴联苯	mg/kg	IEC 62321: 2008 (附录 A), GC-MS	N.D.	5	
九溴联苯	mg/kg	IEC 62321: 2008 (附录 A), GC-MS	N.D.	5	
十溴联苯	mg/kg	IEC 62321: 2008(附录 A), GC-MS	N.D.	5	
多溴二苯醚(PBDEs)之和	mg/kg	-	N.D.	-	1000
单溴二苯醚	mg/kg	IEC 62321: 2008(附录 A), GC-MS	N.D.	5	
二溴二苯醚	mg/kg	IEC 62321: 2008(附录 A), GC-MS	N.D.	5	
三溴二苯醚	mg/kg	IEC 62321: 2008(附录 A), GC-MS	N.D.	5	
四溴二苯醚	mg/kg	IEC 62321: 2008(附录 A), GC-MS	N.D.	5	
五溴二苯醚	mg/kg	IEC 62321: 2008(附录 A), GC-MS	N.D.	5	
六溴二苯醚	mg/kg	IEC 62321: 2008 (附录 A), GC-MS	N.D.	5	
七溴二苯醚	mg/kg	IEC 62321: 2008(附录 A), GC-MS	N.D.	5	
八溴二苯醚	mg/kg	IEC 62321: 2008(附录 A), GC-MS	N.D.	5	
九溴二苯醚	mg/kg	IEC 62321: 2008(附录 A), GC-MS	N.D.	5	
十溴二苯醚	mg/kg	IEC 62321: 2008(附录 A), GC-MS	N.D.	5	

注释:

1. mg/kg = ppm
2. N.D. = 未检出 (< MDL)
3. MDL = 方法检测限
4. "-" = 未规定
5. 多溴二苯醚 = 多溴联苯醚
6. 本测试报告内容是参照报告编号为 GZ1003019320/CHEM 的中文译本, 中英文版本如有歧异, 概以英文版为准。

备注: 由于样品无法拆分, 因此测试是基于申请人要求整体 (部分) 混合进行测试。

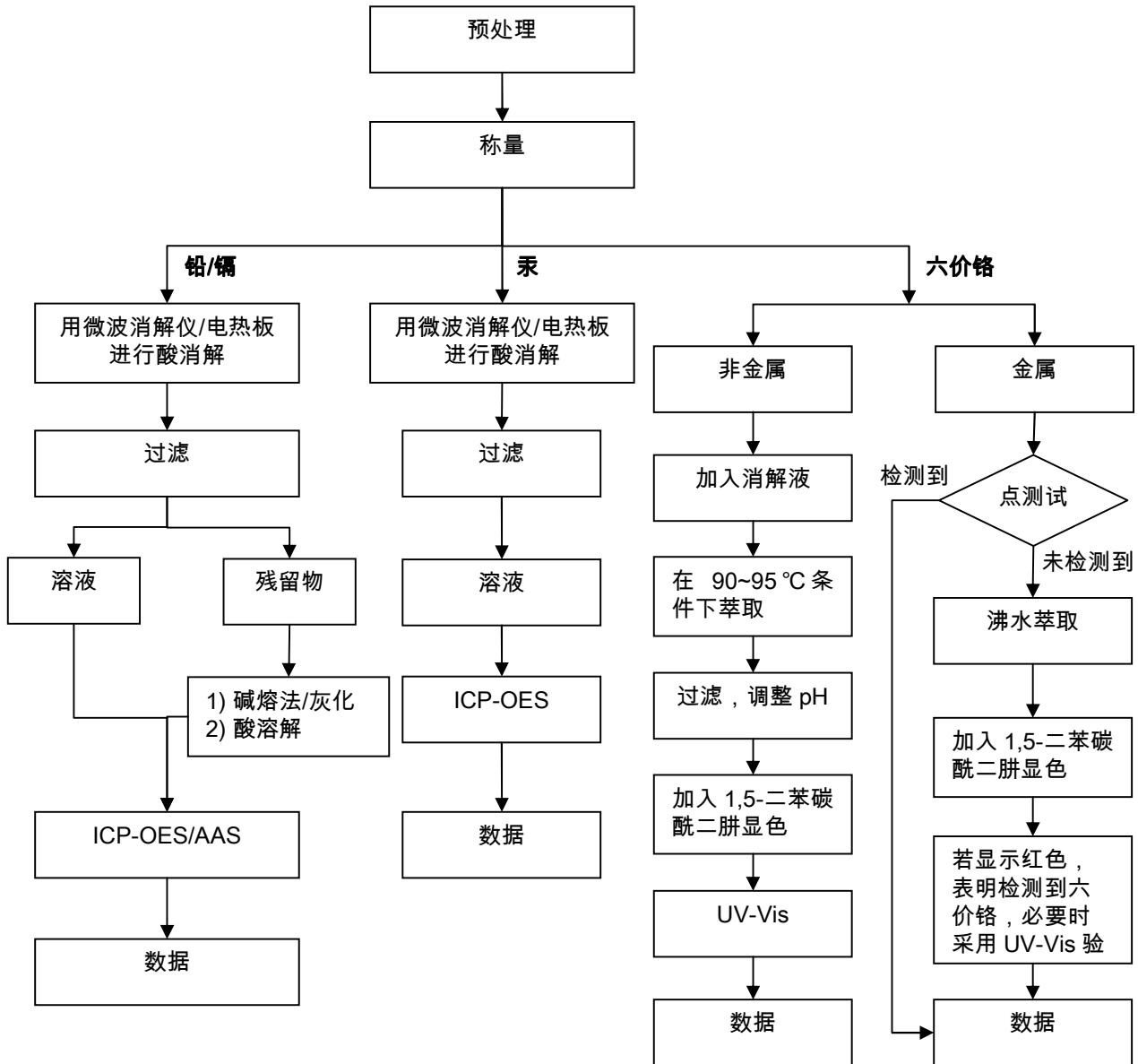
This document is issued by the Company under its General Conditions of Service printed overleaf or available on request and accessible at http://www.sgs.com/terms_and_conditions.htm. Attention is drawn to the limitation of liability, indemnification and jurisdiction issues defined therein. Any holder of this document is advised that information contained hereon reflects the Company's findings at the time of its intervention only and within the limits of Client's instructions, if any. The Company's sole responsibility is to its Client and this document does not generate parties to a transaction from exercising all their rights and obligations under the transaction documents. Any unauthorized alteration, forgery or falsification of the content or appearance of this document is unlawful and offenders may be prosecuted to the fullest extent of the law. Unless otherwise stated, the results shown in this test report refer only to the sample(s) tested. This document cannot be reproduced except in full, without prior approval of the Company.



附件

测试流程图

- 1) 分析人员: 汪丹
- 2) 项目负责人: 余奕东
- 3) 样品按照下述流程被完全消解 (六价铬除外)。

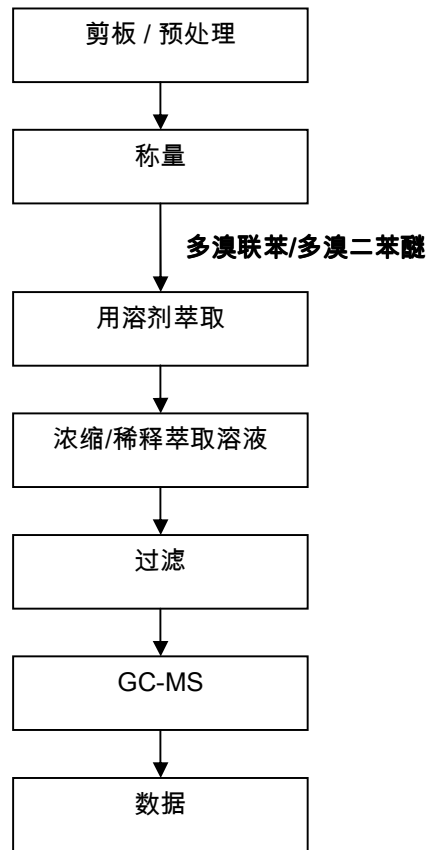


This document is issued by the Company under its General Conditions of Service printed overleaf or available on request and accessible at http://www.sgs.com/terms_and_conditions.htm. Attention is drawn to the limitation of liability, indemnification and jurisdiction issues defined therein. Any holder of this document is advised that information contained hereon reflects the Company's findings at the time of its intervention only and within the limits of Client's instructions, if any. The Company's sole responsibility is to its Client and this document does not generate parties to a transaction from exercising all their rights and obligations under the transaction documents. Any unauthorized alteration, forgery or falsification of the content or appearance of this document is unlawful and offenders may be prosecuted to the fullest extent of the law. Unless otherwise stated, the results shown in this test report refer only to the sample(s) tested. This document cannot be reproduced except in full, without prior approval of the Company.



测试流程图

- 1) 分析人员: 赵瑞娜
- 2) 项目负责人: 杨伟兴

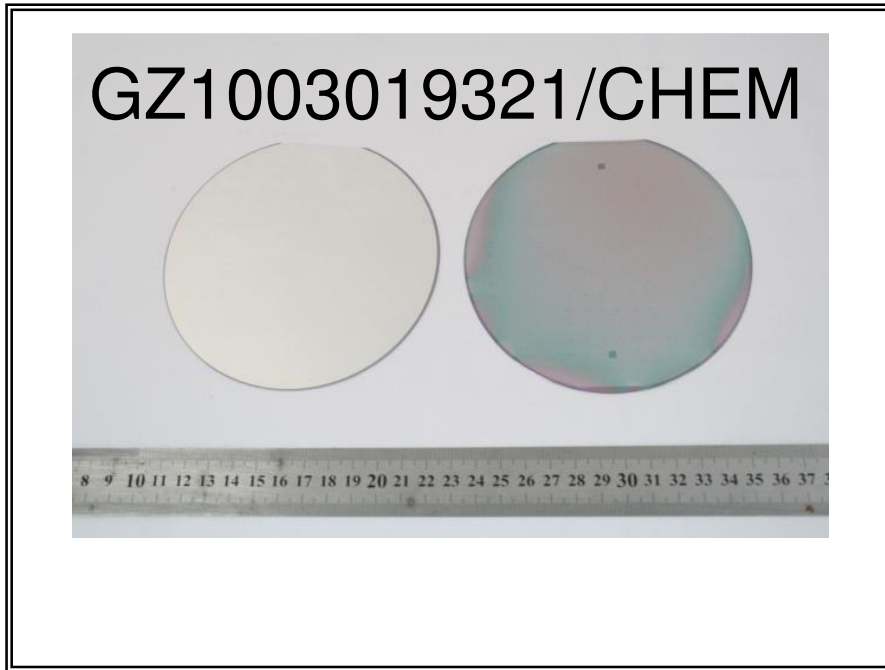


This document is issued by the Company under its General Conditions of Service printed overleaf or available on request and accessible at http://www.sgs.com/terms_and_conditions.htm. Attention is drawn to the limitation of liability, indemnification and jurisdiction issues defined therein. Any holder of this document is advised that information contained hereon reflects the Company's findings at the time of its intervention only and within the limits of Client's instructions, if any. The Company's sole responsibility is to its Client and this document does not generate parties to a transaction from exercising all their rights and obligations under the transaction documents. Any unauthorized alteration, forgery or falsification of the content or appearance of this document is unlawful and offenders may be prosecuted to the fullest extent of the law.

Unless otherwise stated, the results shown in this test report refer only to the sample(s) tested. This document cannot be reproduced except in full, without prior approval of the Company.



样品照片:



此图片仅限于随 SGS 正本报告使用

*** 报告完 ***

This document is issued by the Company under its General Conditions of Service printed overleaf or available on request and accessible at http://www.sgs.com/terms_and_conditions.htm. Attention is drawn to the limitation of liability, indemnification and jurisdiction issues defined therein. Any holder of this document is advised that information contained hereon reflects the Company's findings at the time of its intervention only and within the limits of Client's instructions, if any. The Company's sole responsibility is to its Client and this document does not generate parties to a transaction from exercising all their rights and obligations under the transaction documents. Any unauthorized alteration, forgery or falsification of the content or appearance of this document is unlawful and offenders may be prosecuted to the fullest extent of the law. Unless otherwise stated, the results shown in this test report refer only to the sample(s) tested. This document cannot be reproduced except in full, without prior approval of the Company.



198 Kazhu Road, Sointech Park, Guangzhou Economic & Technology Development District, Guangzhou, China 510663 | (86-20) 82155555 | (86-20) 82075125 | www.cn.sgs.com
中国·广州·经济技术开发区科学城科珠路198号 邮编: 510663 | (86-20) 82155555 | (86-20) 82075125 | e: sgs.china@sgs.com