



**Test Report**

No.: GZ1003019320/CHEM

Date: MAR 05, 2010

Page 1 of 5

HANGZHOU SILAN INTEGRATED CIRCUIT CO., LTD  
NO.308 10 ROAD, EAST HETZ, HANGZHOU P.R CHINA

The following sample(s) was/were submitted and identified on behalf of the applicant as 2KG (YQ)

SGS Job No. : GZ12399633EC

SGS Internal Reference No. : 18.7

Date of Sample Received : MAR 01, 2010

Testing Period : MAR 01, 2010 TO MAR 04, 2010

Test Requested : Selected test (s) as requested by client.

Test Method : Please refer to next page(s).

Test Result(s) : Please refer to next page(s).

Conclusion : Based on the performed tests on submitted sample(s), the results **comply with** the RoHS Directive 2002/95/EC and its subsequent amendments.

Signed for and on behalf of  
SGS-CSTC Ltd.

---

Manson Yang  
Sr. Engineer

Signed for and on behalf of  
SGS-CSTC Ltd.

---

Jane He  
Tech. Manager



## Test Report

No.: GZ1003019320/CHEM

Date: MAR 05, 2010

Page 2 of 5

### Test Results:

Description for specimen 1 : "Chip"

### RoHS Directive 2002/95/EC

Test Item(s)	Unit	Test Method (Reference)	Result	MDL	Limit
Cadmium (Cd)	mg/kg	IEC 62321: 2008(Section 8/9/10), ICP-OES	N.D.	2	100
Lead (Pb)	mg/kg	IEC 62321: 2008(Section 8/9/10), ICP-OES	N.D.	2	1000
Mercury (Hg)	mg/kg	IEC 62321: 2008(Section 7), ICP-OES	N.D.	2	1000
Hexavalent Chromium (CrVI) by alkaline extraction	mg/kg	IEC 62321: 2008(Annex C), UV-Vis	N.D.	2	1000
Sum of PBBs	mg/kg	-	N.D.	-	1000
Monobromobiphenyl	mg/kg	IEC 62321: 2008(Annex A), GC-MS	N.D.	5	
Dibromobiphenyl	mg/kg	IEC 62321: 2008(Annex A), GC-MS	N.D.	5	
Tribromobiphenyl	mg/kg	IEC 62321: 2008(Annex A), GC-MS	N.D.	5	
Tetrabromobiphenyl	mg/kg	IEC 62321: 2008(Annex A), GC-MS	N.D.	5	
Pentabromobiphenyl	mg/kg	IEC 62321: 2008(Annex A), GC-MS	N.D.	5	
Hexabromobiphenyl	mg/kg	IEC 62321: 2008(Annex A), GC-MS	N.D.	5	
Heptabromobiphenyl	mg/kg	IEC 62321: 2008(Annex A), GC-MS	N.D.	5	
Octabromobiphenyl	mg/kg	IEC 62321: 2008(Annex A), GC-MS	N.D.	5	
Nonabromobiphenyl	mg/kg	IEC 62321: 2008(Annex A), GC-MS	N.D.	5	
Decabromobiphenyl	mg/kg	IEC 62321: 2008(Annex A), GC-MS	N.D.	5	
Sum of PBDEs	mg/kg	-	N.D.	-	1000
Monobromodiphenyl ether	mg/kg	IEC 62321: 2008(Annex A), GC-MS	N.D.	5	
Dibromodiphenyl ether	mg/kg	IEC 62321: 2008(Annex A), GC-MS	N.D.	5	
Tribromodiphenyl ether	mg/kg	IEC 62321: 2008(Annex A), GC-MS	N.D.	5	
Tetrabromodiphenyl ether	mg/kg	IEC 62321: 2008(Annex A), GC-MS	N.D.	5	
Pentabromodiphenyl ether	mg/kg	IEC 62321: 2008(Annex A), GC-MS	N.D.	5	
Hexabromodiphenyl ether	mg/kg	IEC 62321: 2008(Annex A), GC-MS	N.D.	5	
Heptabromodiphenyl ether	mg/kg	IEC 62321: 2008(Annex A), GC-MS	N.D.	5	
Octabromodiphenyl ether	mg/kg	IEC 62321: 2008(Annex A), GC-MS	N.D.	5	
Nonabromodiphenyl ether	mg/kg	IEC 62321: 2008(Annex A), GC-MS	N.D.	5	
Decabromodiphenyl ether	mg/kg	IEC 62321: 2008(Annex A), GC-MS	N.D.	5	

#### Note:

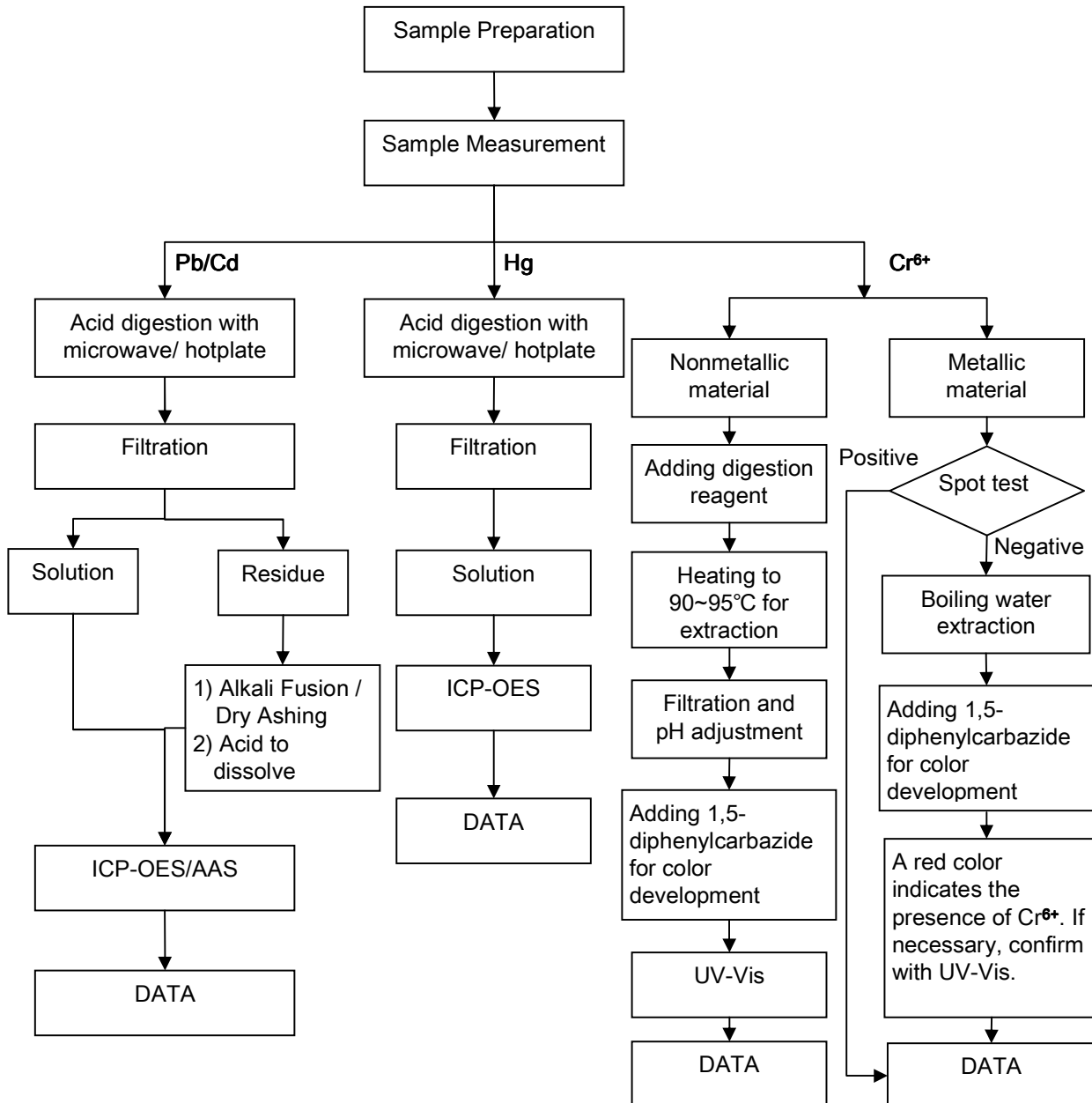
1. mg/kg = ppm
2. N.D. = Not Detected (< MDL)
3. MDL = Method Detection Limit
4. "-" = Not regulated

Remark : As requested by client, the test was conducted as whole / part sample, for the sample can't be disjointed.

### ATTACHMENTS

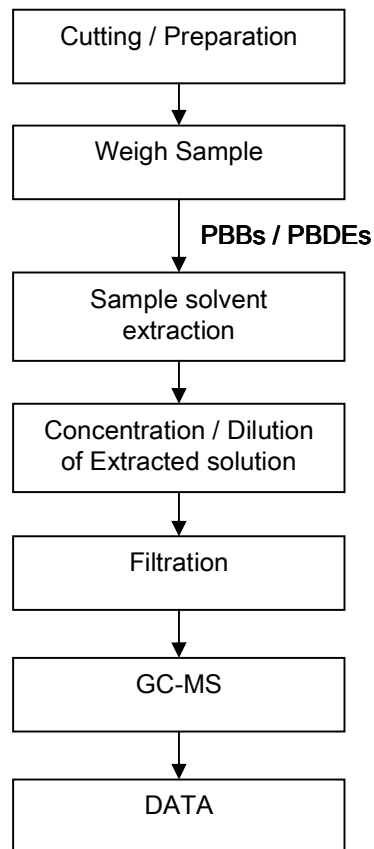
#### Testing Flow Chart

- 1) Name of the person who made measurement: Bella Wang
- 2) Name of the person in charge of measurement: Adams Yu
- 3) These samples were dissolved totally by pre-conditioning method according to below flow chart (Cr<sup>6+</sup> test method excluded) .

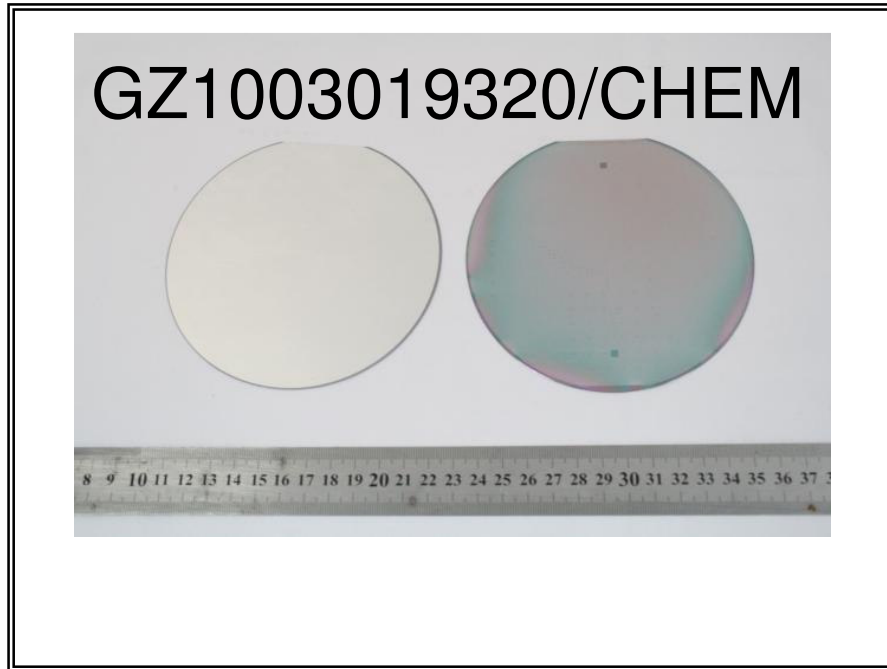


### Testing Flow Chart

- 1) Name of the person who made measurement: Tina Zhao
- 2) Name of the person in charge of measurement: Ryan Yang



Sample photo :



SGS authenticate the photo on original report only

\*\*\* End of Report \*\*\*