



## Test Report

No.: GZ1003019328/CHEM

Date: MAR 05, 2010

Page 1 of 5

HANGZHOU SILAN INTEGRATED CIRCUIT CO., LTD  
NO.308 10 ROAD, EAST HETZ, HANGZHOU P.R CHINA

The following sample(s) was/were submitted and identified on behalf of the applicant as 2SF (YL)

SGS Job No. : GZ12399633EC

SGS Internal Reference No. : 18.15

Date of Sample Received : MAR 01, 2010

Testing Period : MAR 01, 2010 TO MAR 04, 2010

Test Requested : Selected test (s) as requested by client.

Test Method : Please refer to next page(s).

Test Result(s) : Please refer to next page(s).

Conclusion : Based on the performed tests on submitted sample(s), the results **comply with** the RoHS Directive 2002/95/EC and its subsequent amendments.

Signed for and on behalf of  
SGS-CSTC Ltd.

Manson Yang  
Sr. Engineer

Signed for and on behalf of  
SGS-CSTC Ltd.

Jane He  
Tech. Manager

This document is issued by the Company under its General Conditions of Service printed overleaf or available on request and accessible at [http://www.sgs.com/terms\\_and\\_conditions.htm](http://www.sgs.com/terms_and_conditions.htm). Attention is drawn to the limitation of liability, indemnification and jurisdiction issues defined therein. Any holder of this document is advised that information contained hereon reflects the Company's findings at the time of its intervention only and within the limits of Client's instructions, if any. The Company's sole responsibility is to its Client and this document does not generate parties to a transaction from exercising all their rights and obligations under the transaction documents. Any unauthorized alteration, forgery or falsification of the content or appearance of this document is unlawful and offenders may be prosecuted to the fullest extent of the law.  
Unless otherwise stated, the results shown in this test report refer only to the sample(s) tested. This document cannot be reproduced except in full, without prior approval of the Company.



SGS Standards Technical Services Co., Ltd  
Guangzhou Environmental Chemical Laboratory

198 Kazhu Road, Sointech Park, Guangzhou Economic & Technology Development District, Guangzhou, China 510663 | (86-20) 82155555 | (86-20) 82075125 | www.cn.sgs.com  
中国·广州·经济技术开发区科学城科珠路198号 邮编: 510663 | (86-20) 82155555 | (86-20) 82075125 | e: sgs.china@sgs.com

Member of the SGS Group (SGS SA)



# Test Report

No.: GZ1003019328/CHEM

Date: MAR 05, 2010

Page 2 of 5

### Test Results:

Description for specimen 1 : "Chip"

### RoHS Directive 2002/95/EC

Test Item(s)	Unit	Test Method (Reference)	Result	MDL	Limit
Cadmium (Cd)	mg/kg	IEC 62321: 2008(Section 8/9/10), ICP-OES	N.D.	2	100
Lead (Pb)	mg/kg	IEC 62321: 2008(Section 8/9/10), ICP-OES	4	2	1000
Mercury (Hg)	mg/kg	IEC 62321: 2008(Section 7), ICP-OES	N.D.	2	1000
Hexavalent Chromium (CrVI) by alkaline extraction	mg/kg	IEC 62321: 2008(Annex C), UV-Vis	N.D.	2	1000
Sum of PBBs	mg/kg	-	N.D.	-	1000
Monobromobiphenyl	mg/kg	IEC 62321: 2008(Annex A), GC-MS	N.D.	5	
Dibromobiphenyl	mg/kg	IEC 62321: 2008(Annex A), GC-MS	N.D.	5	
Tribromobiphenyl	mg/kg	IEC 62321: 2008(Annex A), GC-MS	N.D.	5	
Tetrabromobiphenyl	mg/kg	IEC 62321: 2008(Annex A), GC-MS	N.D.	5	
Pentabromobiphenyl	mg/kg	IEC 62321: 2008(Annex A), GC-MS	N.D.	5	
Hexabromobiphenyl	mg/kg	IEC 62321: 2008(Annex A), GC-MS	N.D.	5	
Heptabromobiphenyl	mg/kg	IEC 62321: 2008(Annex A), GC-MS	N.D.	5	
Octabromobiphenyl	mg/kg	IEC 62321: 2008(Annex A), GC-MS	N.D.	5	
Nonabromobiphenyl	mg/kg	IEC 62321: 2008(Annex A), GC-MS	N.D.	5	
Decabromobiphenyl	mg/kg	IEC 62321: 2008(Annex A), GC-MS	N.D.	5	
Sum of PBDEs	mg/kg	-	N.D.	-	1000
Monobromodiphenyl ether	mg/kg	IEC 62321: 2008(Annex A), GC-MS	N.D.	5	
Dibromodiphenyl ether	mg/kg	IEC 62321: 2008(Annex A), GC-MS	N.D.	5	
Tribromodiphenyl ether	mg/kg	IEC 62321: 2008(Annex A), GC-MS	N.D.	5	
Tetrabromodiphenyl ether	mg/kg	IEC 62321: 2008(Annex A), GC-MS	N.D.	5	
Pentabromodiphenyl ether	mg/kg	IEC 62321: 2008(Annex A), GC-MS	N.D.	5	
Hexabromodiphenyl ether	mg/kg	IEC 62321: 2008(Annex A), GC-MS	N.D.	5	
Heptabromodiphenyl ether	mg/kg	IEC 62321: 2008(Annex A), GC-MS	N.D.	5	
Octabromodiphenyl ether	mg/kg	IEC 62321: 2008(Annex A), GC-MS	N.D.	5	
Nonabromodiphenyl ether	mg/kg	IEC 62321: 2008(Annex A), GC-MS	N.D.	5	
Decabromodiphenyl ether	mg/kg	IEC 62321: 2008(Annex A), GC-MS	N.D.	5	

### Note:

1. mg/kg = ppm
2. N.D. = Not Detected (< MDL)
3. MDL = Method Detection Limit
4. "-" = Not regulated

Remark : As requested by client, the test was conducted as whole / part sample, for the sample can't be disjointed.

This document is issued by the Company under its General Conditions of Service printed overleaf or available on request and accessible at [http://www.sgs.com/terms\\_and\\_conditions.htm](http://www.sgs.com/terms_and_conditions.htm). Attention is drawn to the limitation of liability, indemnification and jurisdiction issues defined therein. Any holder of this document is advised that information contained hereon reflects the Company's findings at the time of its intervention only and within the limits of Client's instructions, if any. The Company's sole responsibility is to its Client and this document does not generate parties to a transaction from exercising all their rights and obligations under the transaction documents. Any unauthorized alteration, forgery or falsification of the content or appearance of this document is unlawful and offenders may be prosecuted to the fullest extent of the law.

Unless otherwise stated, the results shown in this test report refer only to the sample(s) tested. This document cannot be reproduced except in full, without prior approval of the Company.



SGS Standards Technical Services Co., Ltd  
Guangzhou RoHS Chemical Laboratory

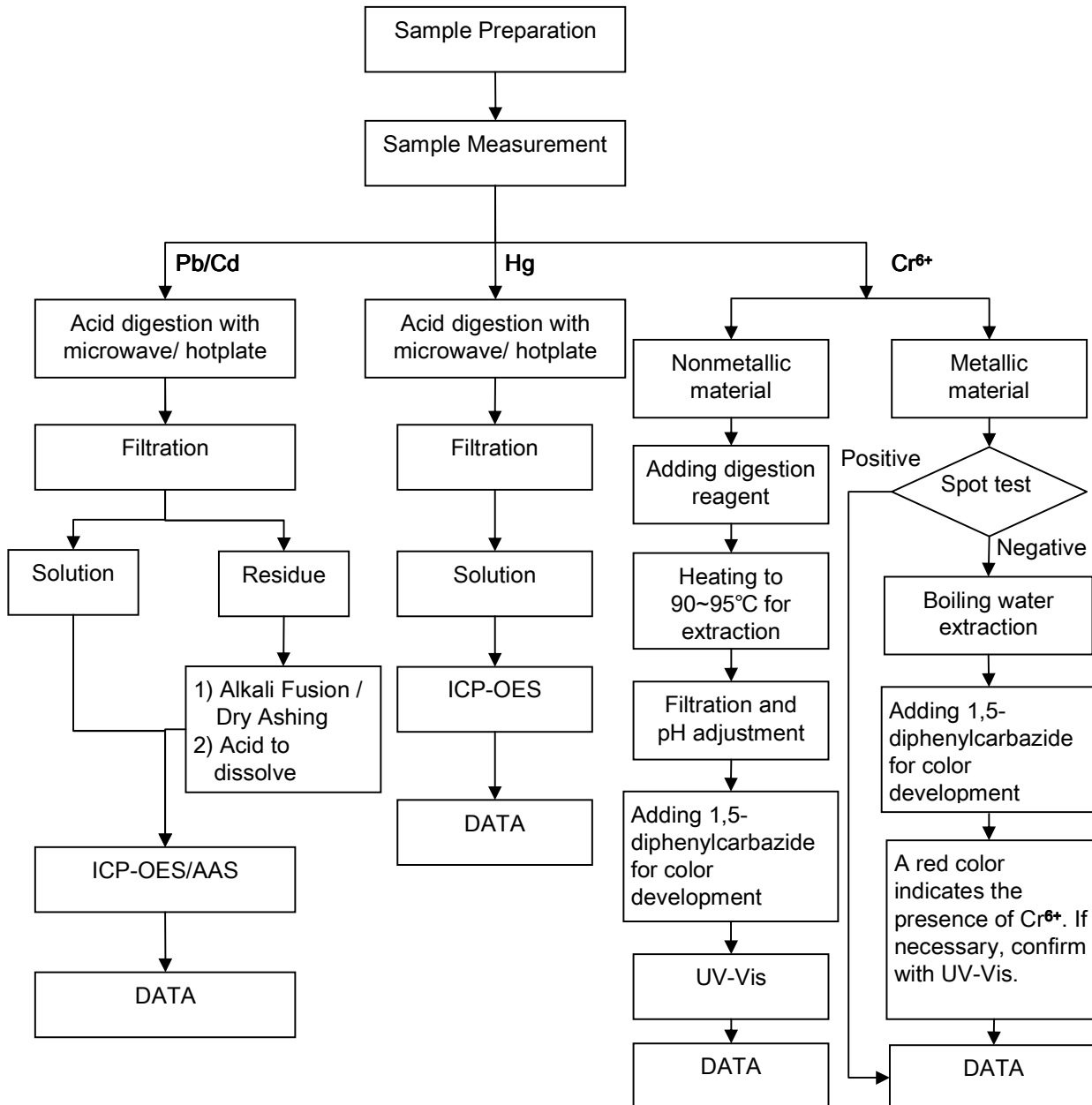
198 Kazhu Road, Sointech Park, Guangzhou Economic & Technology Development District, Guangzhou, China 510663 | (86-20) 82155555 | (86-20) 82075125 | www.cn.sgs.com  
中国·广州·经济技术开发区科学城科珠路198号 邮编: 510663 | (86-20) 82155555 | (86-20) 82075125 | e: sgs.china@sgs.com

Member of the SGS Group (SGS SA)

### ATTACHMENTS

#### Testing Flow Chart

- 1) Name of the person who made measurement: Bella Wang
- 2) Name of the person in charge of measurement: Adams Yu
- 3) These samples were dissolved totally by pre-conditioning method according to below flow chart (Cr<sup>6+</sup> test method excluded).



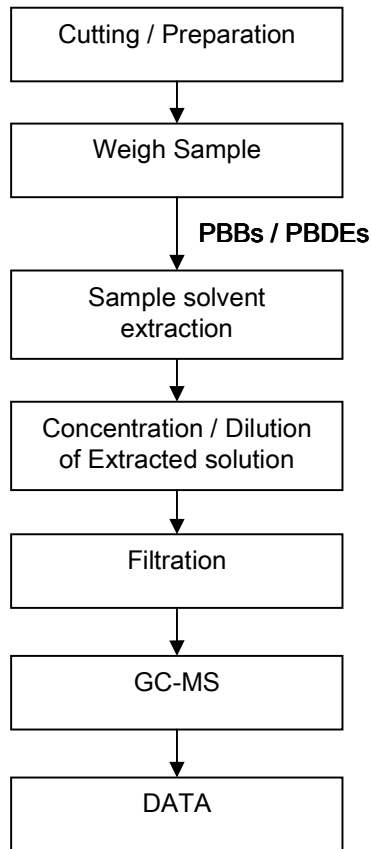
This document is issued by the Company under its General Conditions of Service printed overleaf or available on request and accessible at [http://www.sgs.com/terms\\_and\\_conditions.htm](http://www.sgs.com/terms_and_conditions.htm). Attention is drawn to the limitation of liability, indemnification and jurisdiction issues defined therein. Any holder of this document is advised that information contained hereon reflects the Company's findings at the time of its intervention only and within the limits of Client's instructions, if any. The Company's sole responsibility is to its Client and this document does not generate parties to a transaction from exercising all their rights and obligations under the transaction documents. Any unauthorized alteration, forgery or falsification of the content or appearance of this document is unlawful and offenders may be prosecuted to the fullest extent of the law.

Unless otherwise stated, the results shown in this test report refer only to the sample(s) tested. This document cannot be reproduced except in full, without prior approval of the Company.



### Testing Flow Chart

- 1) Name of the person who made measurement: Tina Zhao
- 2) Name of the person in charge of measurement: Ryan Yang



This document is issued by the Company under its General Conditions of Service printed overleaf or available on request and accessible at [http://www.sgs.com/terms\\_and\\_conditions.htm](http://www.sgs.com/terms_and_conditions.htm). Attention is drawn to the limitation of liability, indemnification and jurisdiction issues defined therein. Any holder of this document is advised that information contained hereon reflects the Company's findings at the time of its intervention only and within the limits of Client's instructions, if any. The Company's sole responsibility is to its Client and this document does not generate parties to a transaction from exercising all their rights and obligations under the transaction documents. Any unauthorized alteration, forgery or falsification of the content or appearance of this document is unlawful and offenders may be prosecuted to the fullest extent of the law.



Sample photo :



SGS authenticate the photo on original report only

\*\*\* End of Report \*\*\*

This document is issued by the Company under its General Conditions of Service printed overleaf or available on request and accessible at [http://www.sgs.com/terms\\_and\\_conditions.htm](http://www.sgs.com/terms_and_conditions.htm). Attention is drawn to the limitation of liability, indemnification and jurisdiction issues defined therein. Any holder of this document is advised that information contained hereon reflects the Company's findings at the time of its intervention only and within the limits of Client's instructions, if any. The Company's sole responsibility is to its Client and this document does not generate parties to a transaction from exercising all their rights and obligations under the transaction documents. Any unauthorized alteration, forgery or falsification of the content or appearance of this document is unlawful and offenders may be prosecuted to the fullest extent of the law.



138 Kazhu Road, Sointech Park, Guangzhou Economic & Technology Development District, Guangzhou, China 510663 | (86-20) 82155555 | (86-20) 82075125 | www.cn.sgs.com  
中国·广州·经济技术开发区科学城科珠路198号 邮编: 510663 | (86-20) 82155555 | (86-20) 82075125 | e sgs.china@sgs.com

Member of the SGS Group (SGS SA)